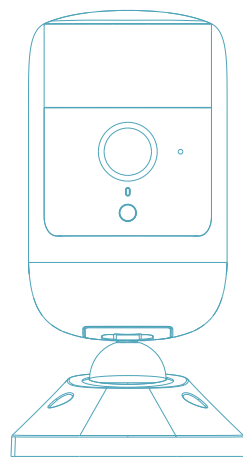


DUAI-PIR

Battery Powered Security Camera

BCS0211



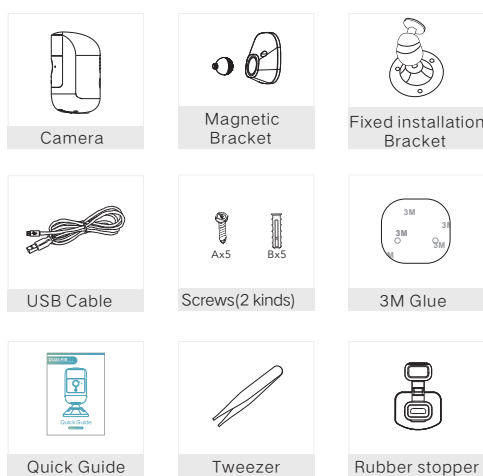
Quick Guide

Version V1.0

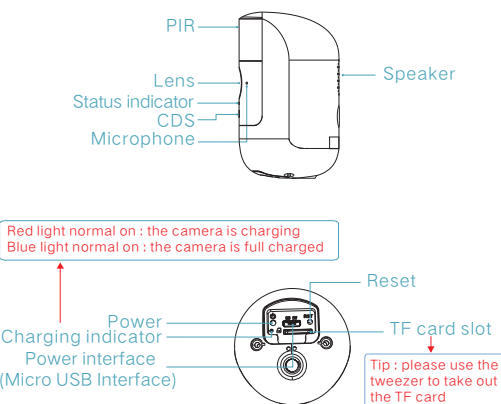
Content

- What 's in the box01
- Product structure02
- App operation guide03
- How to setup(Wireless connection)04
- Installation05
- App function display 1-106
- App function display 1-207
- Camera Settings08
- Functions09
- Precautions10

What 's in the box



Product structure



Red light normal on : the camera is charging
Blue light normal on : the camera is full charged

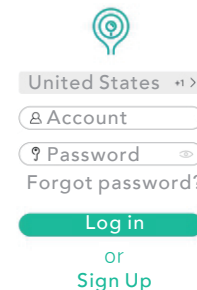
Status indicator
The red indicator flickers slowly :wait the user to add the device
The red indicator flickers quickly :connecting the WIFI
The red indicator normally on :no internet accessed
The blue indicator normally on :the camera is online

App operation guide

Download the APP
Scan the below QR code or Search "Cloudedge" on Google play / App store to download the app

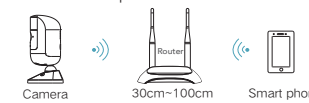


User Sign up
You can sign up an account by email , Click " Sign up " then select the country or region you are located and complete your register



How to setup (Wireless connection)

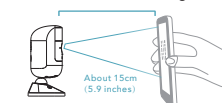
1.Place the camera and phone within 30cm-100cm of the router, then connect the phone to wifi.



2.Power on the camera
Press and hold the power button for 5 seconds to turn on the camera ,if can not power on , please plug in DC5V 1A/2A phone adaptor to charge 15min firstly ,ensure the indicator slowly blinking in red (if not blinking red,press the reset button 5 seconds to reset the camera)



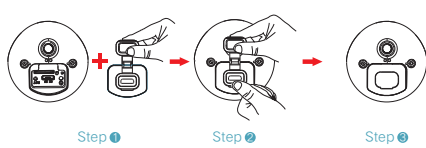
3.Add the camera
• Log in Cloudedge APP, click + and select "Battery Camera".
• Select 2.4GHZ wifi SSID and enter your password, tap "Next".
• Scan the QR code in front of the camera , after the device recognizes the QR code , it will sound "bugu" then tap "hear Tone"



• Camera will start connecting wifi and skip to the page where the connection is successful , you can edit the camera name , then click "Done" to open the camera in my device list and you can watch the live video .

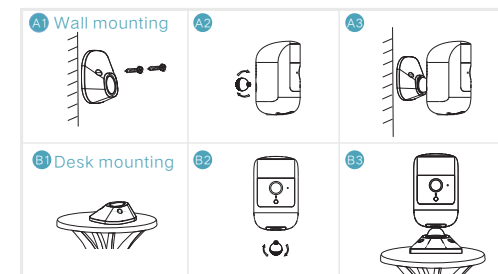
Installation

Installation of rubber plug



Tip: if the rubber plug is not installed, the water-proof will be affected.

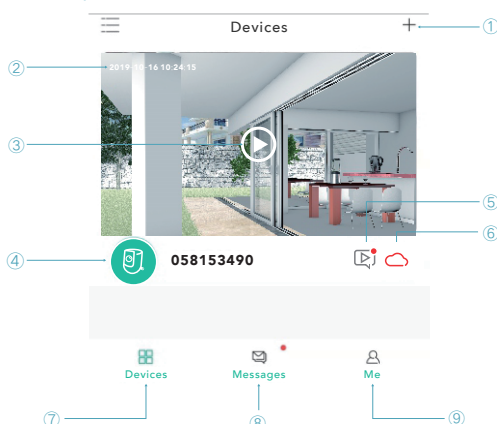
Wall/Desk mounting



Tip: Please install the camera in the suitable location where the WIFI network is good , otherwise the device may be will not working properly!

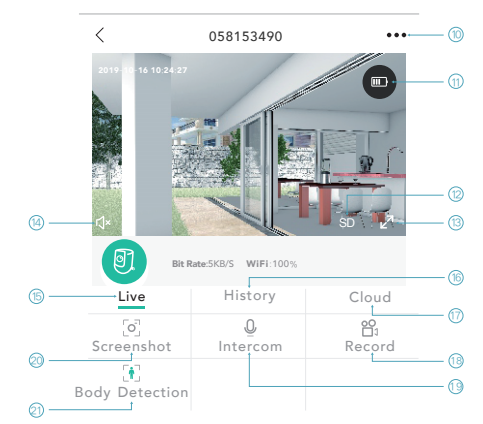
App function display 1-1

Video playing



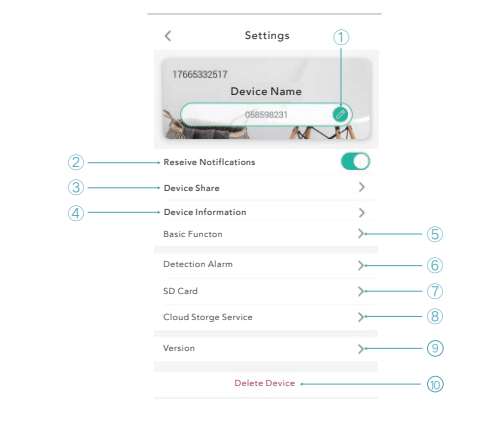
- 1 Add a camera
- 2 Camera time
- 3 Live video play
- 4 Camera name
- 5 Alarm video/Alarm screenshot
- 6 Cloud storage
- 7 Devices list
- 8 Alarm and system message
- 9 Personal homepage

App function display 1-2



- 10 Camera Settings
- 11 Battery capacity
- 12 SD/HD options
- 13 Full screen
- 14 Sound on/off
- 15 Live Video
- 16 TF card video playback
- 17 Cloud video playback
- 18 Mobile recording
- 19 Press and hold to talk
- 20 Screenshot
- 21 Body Detection (Default is on, click again)

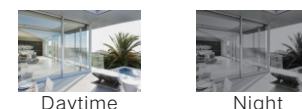
Camera Settings



- 1 Rename the camera
- 2 On/Off the Notifications
- 3 Share the device
- 4 Device Information
- 5 function (On/Off Rotate view, Night Vision, Alarm settings, Power Management)
- 6 Detection Alarm
- 7 TF card information
- 8 Cloud Storage Service
- 9 Version
- 10 Delete the camera

Functions

- Remote wake-up**
The camera will be in a sleep mode to save power,you can have a preview in App
- Two way Audio**
You can see and talk with the visitor in you App from the camera
- Dual-PIR**
Built in Dual-PIR , Compared with the traditional single PIR product , the Dual-PIR camera can get more wider view (160 °) and More quickly wake up the camera no worry missing any important scene also reduce the false alarm rate of the camera
- Low battery alarm**
You can set a low-battery alarm threshold in your phone App, the threshold is set to a minimum of 10% and a maximum of 50%.When the battery power of the camera is lower than the set threshold,the App will have a reminder.
- Record**
Using TF card or enable the Cloud-Storage Service,to keep recording for every moment
- Day&Night**
Powerful night vision means no interruptions,even in complete darkness.



Precautions

- Important Notes for Reducing False Alarms**
- Do not install the camera facing any objects with bright lights,including sunshine,bright lamp lights,etc.
 - Do not place the camera too close to a place where there frequently moving vehicles , Based on numerous tests.
 - Do not install the camera facing the mirror, Keep the camera at least 1 meter.
 - The recommended distance between the camera and vehicles is 15 meters.Stay away from the outlets,including air conditioner vents,humidifier outlets.
 - the heat transfer vents of the projectors,etc.away from any wireless devices,including Wi-Fi routers and phones , in order to avoid wireless interference.

Troubleshooting & suggestion		
NO.	Description	Solution and operation
1	Unable To Connect	1. Check your wifi name and password 2. Ensure your wifi is 2.4G,not support 5G 3. Ensure your camera and phone close to router
2	Reset	1. Press and hold on the reset button for 5 seconds 2. Hear "bugu" sound 3. Red light turns to slow blinking
3	Change to new network	1. Press reset key to factory default settings 2. Re-connection
4	Failed to add device	Please Enable Cloudedge App cellular data on mobile settings
5	No alarm push	Please Enable Cloudedge App notification on mobile settings
6	No alarm video record	Please Insert TF Card